

Evoluent Mouse Manager

for Windows

Don't move the mouse or touch the keyboard.

The less movements you make, the more relaxed you are. The Evoluent Mouse Manager software was created to let you do many things without moving the mouse or touching the keyboard.

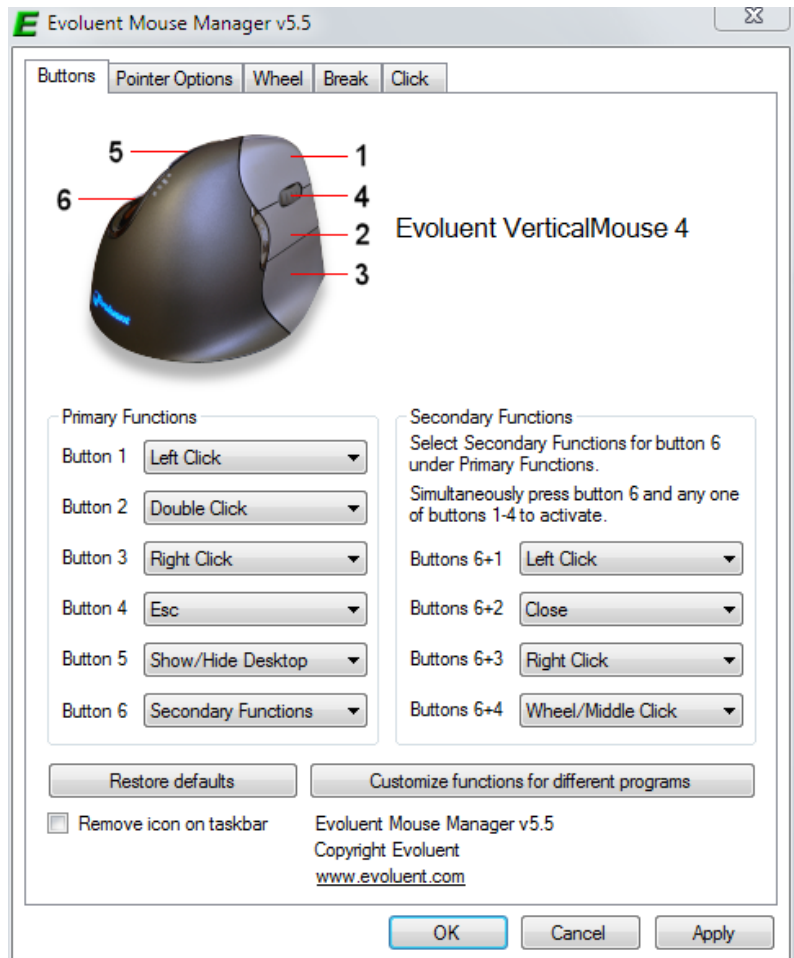
The primary benefits of the Mouse Manager are:

Button Programming

Configure the mouse buttons to perform functions that normally require moving the mouse to click buttons on screen or pressing the keyboard. This reduces mouse movements and hand movements to the keyboard. The buttons may even be configured with different functions in different programs.

Accelerated scrolling

Configure the wheel to scroll a single line per increment when rolled slowly, and scroll many lines per increment when rolled quickly. This significantly reduces the amount of scrolling necessary.



Download the driver at evoluent.com

Buttons tab

The mouse buttons may be programmed to perform a large variety of mouse and keyboard functions. This reduces the need to frequently move the mouse to click tiny buttons on the screen, and the need to frequently move your hand to the keyboard to press keys.

To configure the buttons, pull down the button menus and select the desired functions in the Primary Functions section.

Here is an example of a configuration with functions that are useful when working on the Desktop. You may use any of the many other functions available, or even assign any keyboard key or combination of keys to a mouse button by selecting the Keystroke Recording function.

Button 1 – Left Click

Button 2 – Double Click

One click represents a double click. This makes double clicking much easier and more accurate when opening programs and files.

Button 3 – Right Click

Button 4 – Esc

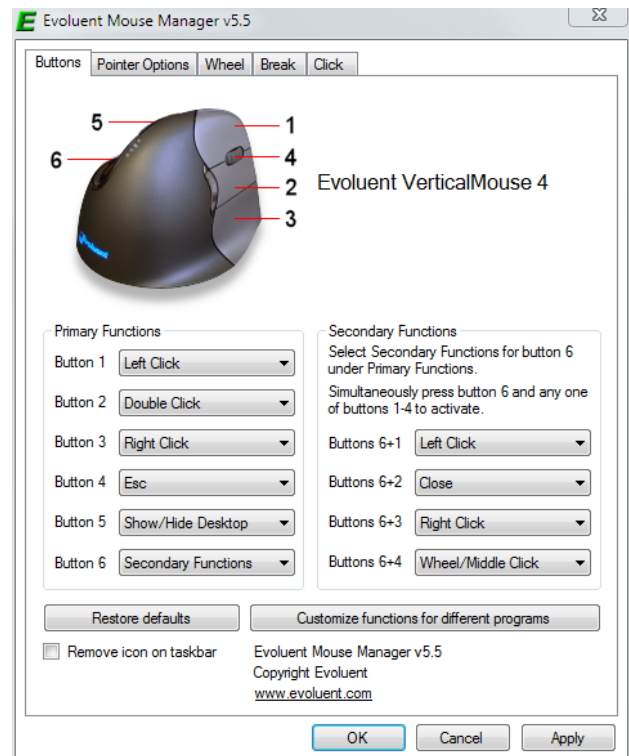
Closes menus and dialog boxes.

Button 5 – Show/Hide Desktop

Press once to minimize all windows to show the desktop to find a program or file, press again to restore all windows.

Button 6 – Secondary Functions

When this function is selected, button 6 may be pressed in combination with buttons 1, 2, 3 or 4 to perform a secondary function. For example, button 2 is configured as double click when pressed by itself, but when buttons 6 and 2 are pressed together, they perform a secondary function. In this example, buttons 6 + 2 are configured as Close for closing windows.



You can configure the buttons in many other ways to suit your needs.

Customize Button Functions For Different Programs

The mouse buttons may be configured to perform different functions in different programs such as Microsoft Word, Adobe Acrobat, Internet Explorer, etc. For example, the middle button may be configured to perform a double click to open programs or files on the desktop, while at the same time it may also be configured to copy text or images in Microsoft Word, and activate the Find function in Adobe Acrobat.

Example 1 – Internet Explorer

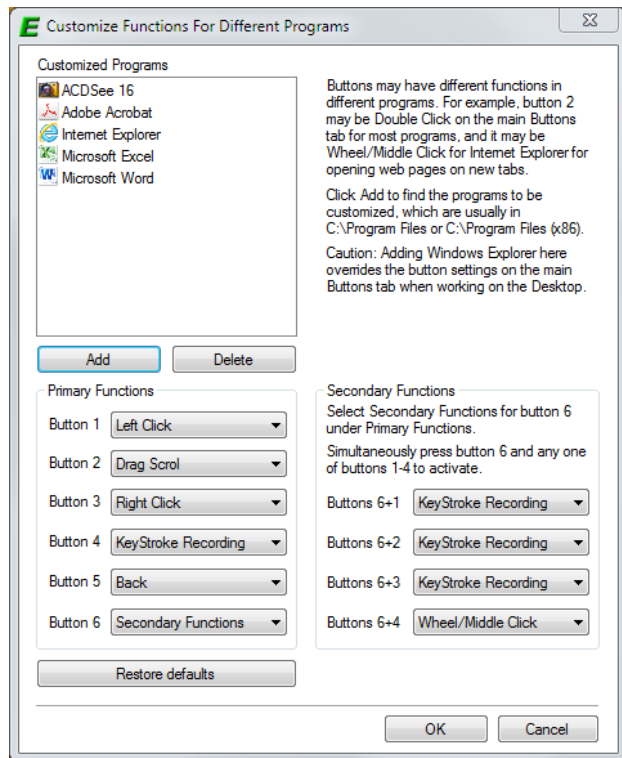
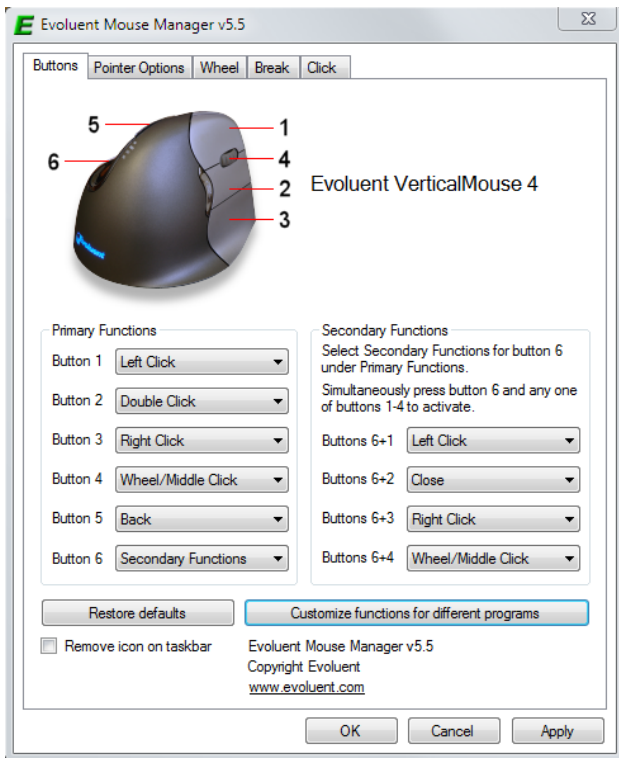
When using Internet Explorer or other internet browser, it is often necessary to go back to previous pages. Pressing the Back button requires downloading the previous pages again in a time consuming process.

A more convenient way of browsing is to open links on new tabs and keep the home page open. This avoids having to press the Back button many times to get back to it. When many tabs are open, the tabs may be brought to the front for viewing. The tabs may be individually closed when they are no longer needed.

These actions may be done by moving the mouse a lot to click menus and buttons on the screen, or moving your hand to use the keyboard. With the Evoluent Mouse Manager, these actions may be done without moving the mouse or touching the keyboard.

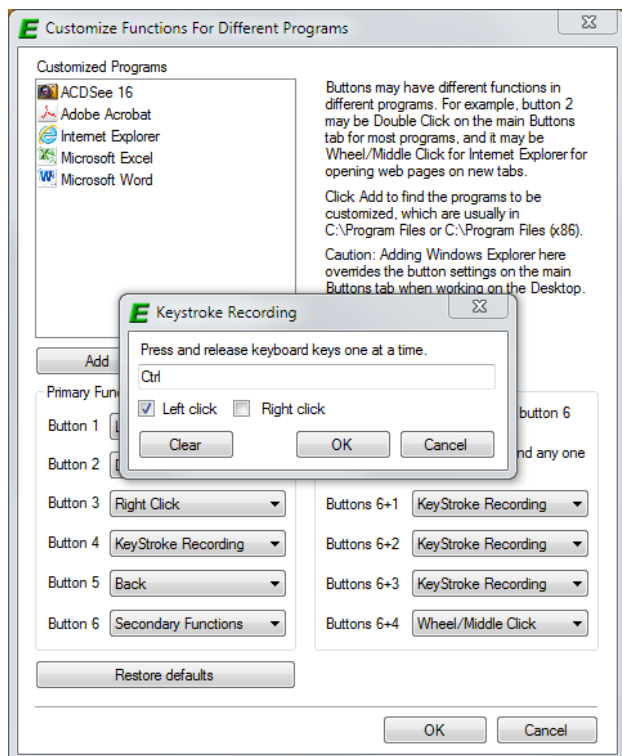
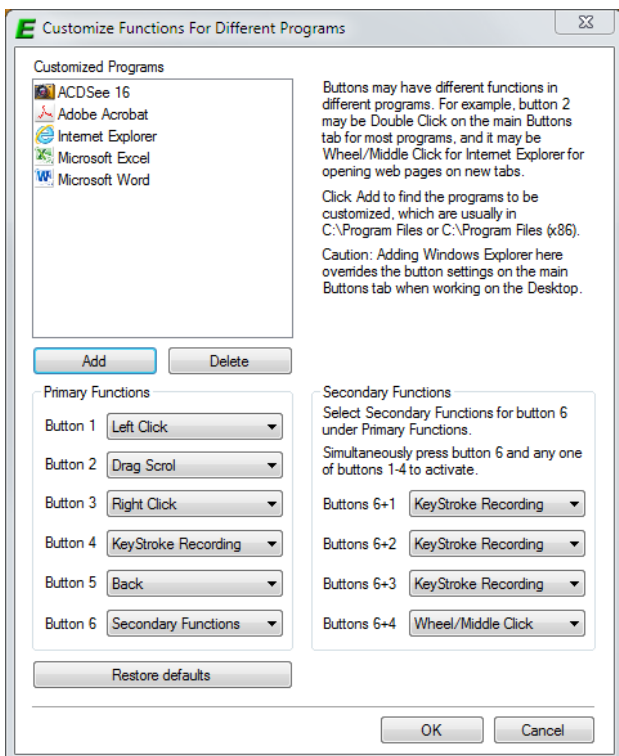
Here is how to configure the buttons to operate specifically in Internet Explorer:

1. Click **Customize functions for different programs** at the bottom right of the Buttons tab.
2. Click **Add** to find the Internet Explorer program. Browse to C drive, Program Files, Internet Explorer, select iexplore.exe, and click Open.



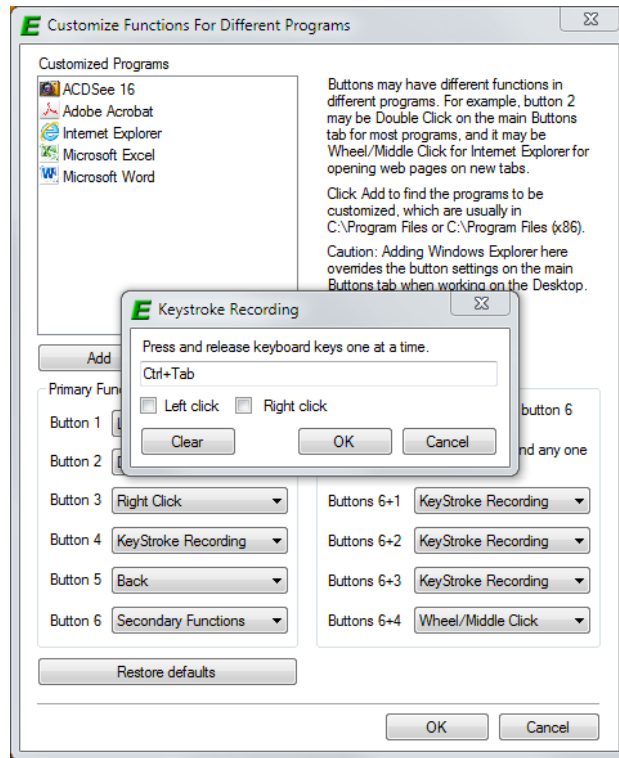
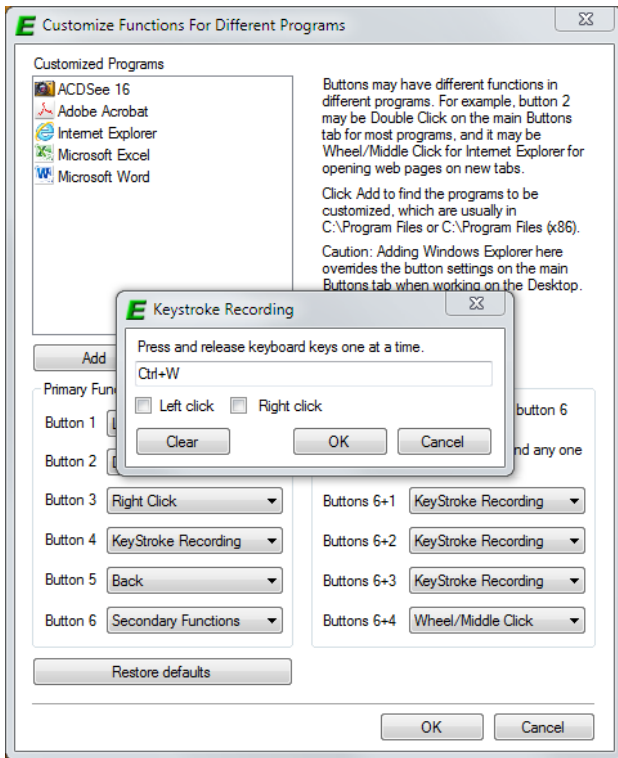
3. Select Secondary Functions for **Button 6**.

4. Open the menu for **Buttons 6 + 1**, select **Keystroke Recording**, press **Ctrl** on the keyboard and check the box for **Left click**, click **OK**.



5. Open the menu for **Buttons 6 + 2**, select Keystroke Recording, press Ctrl and W on the keyboard, and click OK.

6. Open the menu for **Buttons 6 + 3**, select Keystroke Recording, press Ctrl and Tab on the keyboard, and click OK.



Click OK to close **Customize functions for different programs**, and click **OK** to close Evoluent Mouse Manager. Now open Internet Explorer, go to any web site, and try this:

1. Hold down button 6 (bottom thumb button) with your thumb and click button 1 (top finger button) to open a link on a new tab. Do this several times to open several links on additional tabs.
2. Hold down button 6 and click button 3 (bottom finger button) to cycle through the tabs to see different pages.
3. Hold down button 6 and click button 2 (middle finger button) to close each tab when done viewing the page.

Note: The Edge browser in Win 10 is part of Windows Explorer. The settings on the **Buttons** tab apply to Windows Explorer and also to Edge. Therefore Edge may be configured on the **Buttons** tab.

Example 2 – Microsoft Word

Using the same procedure as above, add Microsoft Word to **Customize functions for different applications**. Here is a suggested configuration:

Button 1 – Left Click

Button 2 – Copy

Button 3 – Right Click

Button 4 – Paste

Button 5 – Keystroke Recording (Alt F4 for “Find”)

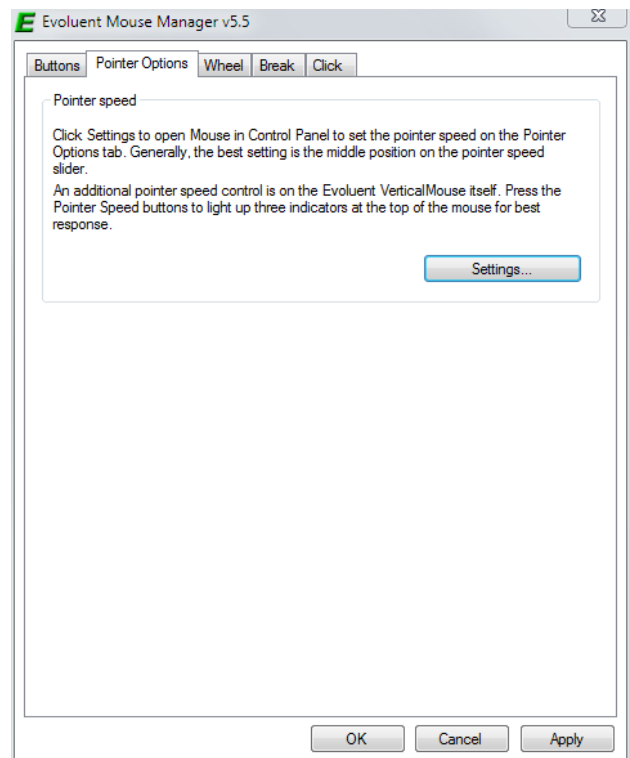
Button 6 – Secondary Functions

Buttons 6 + 1 – Keystroke Recording (Ctrl P for printing)

Buttons 6 + 2 – Keystroke Recording (Alt F4 for closing the window)

Pointer Options tab

Click **Settings** to open the Mouse applet in Window's Control Panel. In the Mouse applet, go to the **Pointer Options** tab, move the slider to the middle, and uncheck **Enhance pointer precision**. On the Evoluent VerticalMouse, press the **pointer speed** buttons to set the pointer speed indicators to MD (medium). This configuration provides the best pointer control.



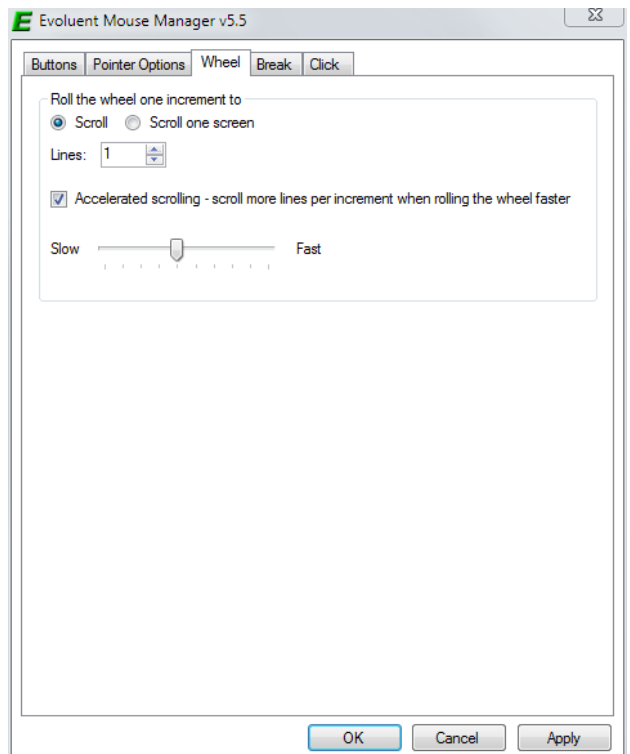
Wheel tab

Without Evoluent Mouse Manager, the scroll wheel scrolls a selected number of lines per increment. The Windows system default is 3 lines. Regardless of how slowly or quickly the wheel is rolled, the number of lines scrolled per increment is the same. 3 lines per increment provides coarse control but faster scrolling. You can reduce the setting to 1 line per increment for fine control but much slower scrolling.

Mouse Manager provides **Accelerated scrolling** for quick scrolling but also fine control at the same time. By default the box is checked and lines per increment set to 1.

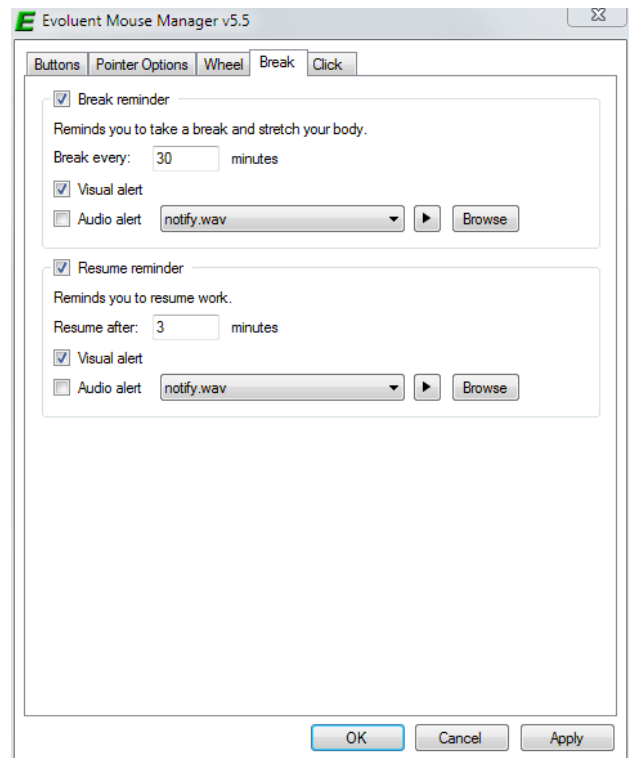
The wheel scrolls 1 line per increment when it is rolled slowly for the finest control possible. It scrolls several lines per increment when it is rolled quickly, but returns to 1 line per increment when rolled slowly again. Mouse Manager automatically varies the number of lines scrolled per increment according to the speed of rolling the wheel. This greatly reduces the amount of wheel movement necessary while still maintaining precision.

The amount of scroll acceleration is adjustable by moving the slider.



Break tab

Check Break Reminder and Resume Reminder to remind yourself to periodically take a break and resume work.



Click tab

Check the box for Click Lock to simulate holding down the left click button even after releasing the button. This is useful for users with physical difficulty holding down the button.

Check the box for Auto Click to perform an automatic single or double click when pausing the pointer over any clickable area. This is useful for users with physical difficulty pressing the button.

